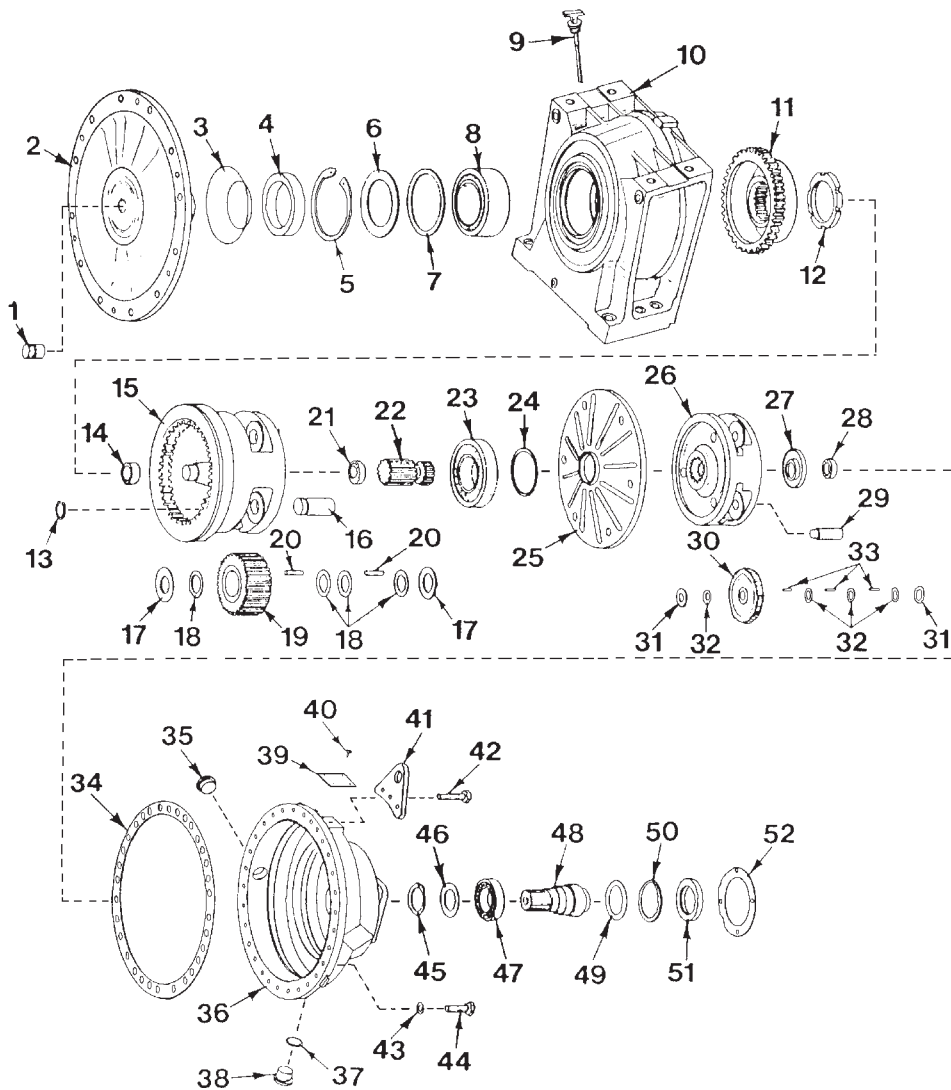
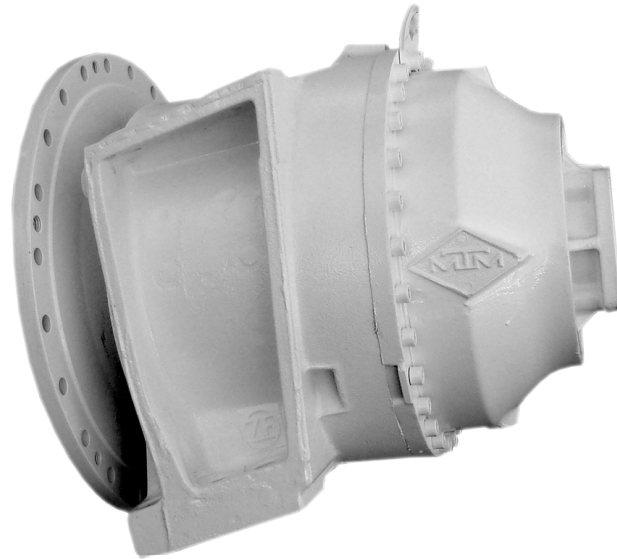


GEARBOXES - ZF MODEL P-7300



GEARBOXES - ZF MODEL P-7300

ITEM	PART #	DESCRIPTION	KIT	QTY	ITEM	PART #	DESCRIPTION	KIT	QTY
	P-7300E	GEARBOX - REBUILT			34	4108-306-172	Gasket	*	1
*	P-7300SK	Seal Kit		1	35	0632-610-066	Oil Sight Glass		1
**	P-7300BK	Bearing Kit		1	36	4108-201-279	Housing		1
1	Not Used				37	0634-801-057	Sealing Ring	*	1
2	4108-303-292	Bearing Flange		1	38	4475-280-018	Screw Plug		1
3	0750-112-169	Sealing Collar	*	1	39	0730-365-127	Name Plate		1
4	4108-306-102	Ring		1	40	0631-311-009	Grooved Pin		4
5	0630-502-067	Retaining Ring		1	41	4108-302-199	Lifting Bracket		1
6	0630-004-189	Thrust Disk		1	42	0636-101-073	Socket Head Cap Screw		3
7	Not Used				43	NotUsed			
8	0750-117-735	Roller Bearing	**	1	44	0636-101-071	Socket Head Cap Screw		27
9	4108-203-149	Oil Dipstick		1	45	0630-531-064	Retaining Ring		1
10	4108-203-154	Bearing Housing		1	46	NotUsed			
11	4108-303-320	Clutch Housing		1	47	0750-116-277	Ball Bearing	**	1
12	0737-502-084	Slotted Nut		1	48	4108-301-450	Input Shaft-21 Spline		1
13	0630-501-031	Retaining Ring		4	49	NotUsed			
14	0635-285-013	Joint Bearing	**	1	50	0630-502-039	Retaining Ring		1
15	4108-303-283	Planetary Carrier		1	51	0634-300-610	Shaft Seal	*	1
16	4108-303-289	Pin		4	52	4108-302-139	Gasket	*	1
17	0730-102-684	Thrust Washer		8					
18	0730-102-816	Intermediate Washer		16					
19	4108-303-298	Planetary Gear		4					
20	0750-119-092	Needle Bearing	**	184					
21	0750-116-322	Ball Bearing	**	1					
22	4108-303-296	SunGear		1					
23	0750-116-137	Ball Bearing	**	1					
24	0630-503-018	Snap Ring		1					
25	4108-301-293	Bearing Cover		1					
26	4108-302-192	Planetary Carrier		1					
27	4108-302-007	Bearing Plate		1					
28	0750-116-343	Ball Bearing	**	1					
29	4108-302-062	Bearing Pin		3					
30	4108-302-190	Planetary Gear		3					
31	0730-105-878	Thrust Washer		3					
32	0730-102-644	Intermediate Washer		12					
33	0735-470-120	Needle Bearing	**	198					